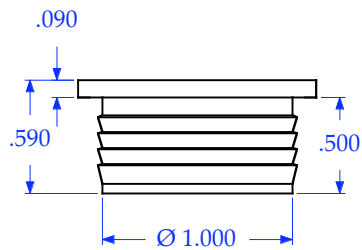
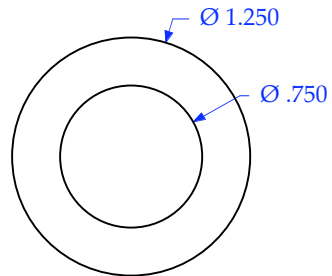


If any questions about mortising occur please call Brusso at 212-337-8510

CP-125



Do not scale drawing

Questions- Call before mortising 212-337-8510

BRUSSO ® <i>Incorporated</i> PRECISION HARDWARE	© 1983-2003 Brusso Inc. 20 Vandam Street New York, NY 10013 212 337 8510 Fax 212 337 9840	Product: CP-125 1.25" Dia. Round Cabinet Pull		Revision: 0
		Component: Assembly drawing		File Name: CP-125 Cabinet Pull -Rev 0
Tolerances unless otherwise specified: Machined features fraction +/- 1/64, Decimal .XXXX +/- .0005, .XXX +/- .005, Angular +/- 1 Degree, Hole Diameter +.003/- .002		Catalog Number: CP-125	Drawn by: SB	Checked by: AS
		Scale: 1:1	Date: 11/04/04	Date: 11/16/03
				Sheet: 1 of 3